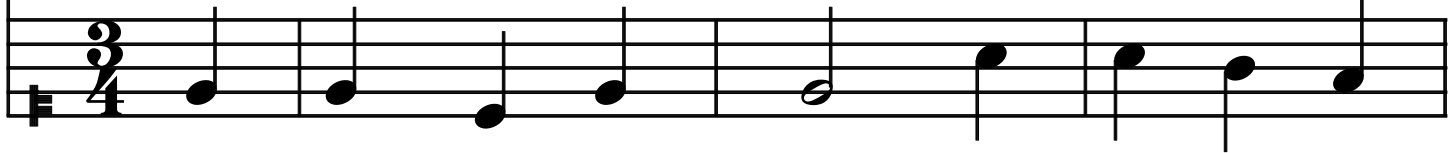


# Hail Queen

[Composer]

**3**  
**4** *s* | *s* *m* *s* | *s* *d* | *d* *t* *l* |


Hail Queen of Heaven the o cean  
O gen tle chaste and spot less



Hail Queen of Heaven the o cean  
O gen tle chaste and spot less

4  
*s*• | *s* *f* *m* | *r* *m* *f* | *m* *s* *m* |

ssstar guide of the wan d'rer here be  
maid, we sin ners make our prayer to

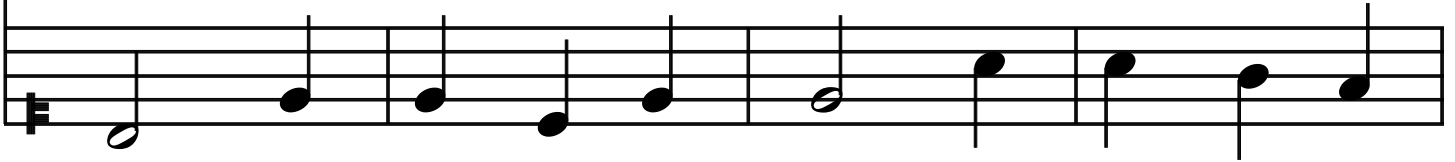


ssstar guide of the wan d'rer here be  
maid, we sin ners make our prayer to

8

*r* | *s* | *s* *m* *s* | *s* | *d* | *d* *t* *l* |

low thrown on\_\_\_\_ life's surge we that claim\_\_ thy  
thee re mind\_\_ thy Son that He\_\_\_\_ has



low thrown on\_\_\_\_ life's surge we that claim\_\_ thy  
thee re mind\_\_ thy Son that He\_\_\_\_ has

12

*s*• | *s* *f* *m* | *r* *m* *f* | *m* | *r* |

care save us from per\_\_\_\_ ril and from  
paid the price of our\_\_\_\_ in i qui



care save us from per\_\_\_\_ ril and from  
paid the price of our\_\_\_\_ in i qui

16

*d.* | *r.* *m* *f* | *m.* | *s* *m* *l* |

woe ty. Mo ther of Christ Star of the  
Vir gin most pure Star of the

woe ty. Mo ther of Christ Star of the  
Vir gin most pure Star of the

20

*s.* | *l* *d* *l* | *s.* *f* *m* | *f* *r* |

Sea pray for the Wan der er pray for  
Sea pray for the Sin\_\_\_\_ ner pray for

Sea pray for the Wan der er pray for  
Sea pray for the Sin\_\_\_\_ ner pray for

24

*s.* | | *l d l* | | *s. f m* | | *f.* | |

me. Pray for the wan der er pray  
me pray for the sin\_\_\_\_\_ ner pray

me. Pray for the wan der er pray  
me pray for the sin\_\_\_\_\_ ner pray

28

*r.* | | *d.* | | *d* | | | | | |

for me. \_\_\_\_\_  
for me. \_\_\_\_\_

for me. \_\_\_\_\_  
for me. \_\_\_\_\_

32

The image shows three measures of musical notation. The top staff contains three black squares, one in each measure, with vertical bar lines separating them. The bottom staff contains a key signature signature (a sharp sign) on the left and three black squares, one in each measure, with vertical bar lines separating them. The right end of the bottom staff is marked with a double bar line.